

181 ROUND DOWN LIGHTS

181 5W ROUND DOWN LIGHT

181 SURFACE MOUNT HOUSING

182 ACCESSORIES

LED LIGHTING

182 TOUCH SWITCH

183 POWER SUPPLIES

182 LEDS

A high quality, energy saving, functional LED cabinet lighting system.

Highest Light Output. All models are installed with high level Cree Xlamp lighting class LEDs, to provide excellent task light quality.

Efficient heat dissipation. Aluminium body and surface conducts and disperses heat swiftly to keep the whole body under 50 deg C. (Halogen is 90 deg C.)

LED lifetime 30,000 – 50,000 hours (6-10 years always on!).

Low electricity consumption and low voltage. Approx 80% less than halogen.

No bulb replacement is required due to long life-time. No UV radiation and low carbon emissions.

2 year warranty.

Safety. RoHS, C-Tick and safety approval – meets Australia / NZ standards

Eco-friendly materials make Artia LED lighting a green product.

Reflector to accentuate streams of light and plastic diffuser to reduce glare
Cool or Warm white light colours are available.

115° Beam angle on 2.5W lights.

Modular system. Power supplies are standard across the range.

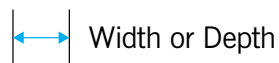
It is easy to link LED lights, power supply, touch switch/dimmer, colour mixing, controllers and sensors with systemised fittings.

All LED lights, power supplies and drivers are assembled with mini plug or connector for DC power input/output, and a 1.5 metre wire.

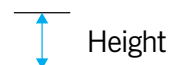
All white lights are dimmable, can be fitted with sensors, touch switches or can be wired to standard switches.



Diameter



Width or Depth



Height



Drill Hole



Degree of Swivel

LIGHT OUTPUT



CW = Cool White



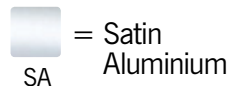
WW = Warm White

FINISHES



BN

= Brushed Nickel



SA

= Satin Aluminium



Efficiency

How “green” is your lighting? This icon stands for energy efficiency.



Includes

What comes with the light or light kit.



Dimmable

This icon indicates that the light is dimmable.



Used With...

Shows the versatility of this accessory.



On/Off

switch used to turn on and off



Motion

PIR Motion sensor



Hand Waving Sensor

IR Sensor switch by hand waving



Coloured Lighting system

Two-colour changing and mixing

artia

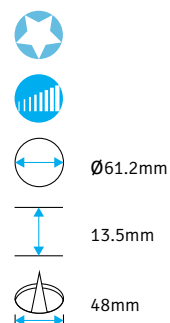
NOTES



ROUND DOWN LIGHT KIT

- 3 x Round down lights AJA-1101XBN
- Power supply with 3-pin distributor
- 1 x Touch knob AJA-20130BN
- On/Off switch
- Minimum 2 lights must be used

| CODES | LIGHT COLOUR |
|--------------------|--------------|
| AJA-40030BN | CW |
| AJA-40031BN | WW |



ROUND DOWN LIGHT

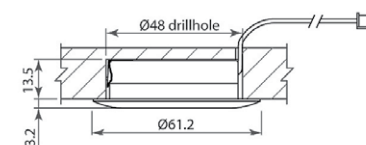
- Best Installed Height 450-550mm
- Push fit Installation

| CODES | WATTS | LIGHT COLOUR | LM | FIN. |
|--------------------|-------|--------------|-----|------|
| AJA-11010BN | 2.5W | CW | 176 | BN |
| AJA-11011BN | 2.5W | WW | 142 | BN |

Handle Finish: Brushed Nickel



BRUSHED NICKEL



SURFACE MOUNT HOUSING

| CODES | WATTS | FIN. |
|--------------------|-------|------|
| AJA-21001BN | Flat | BN |
| AJA-21002BN | Slope | BN |

Handle Finish: Brushed Nickel



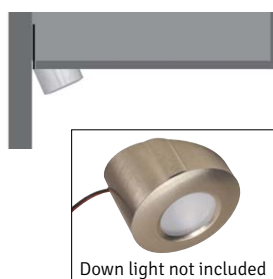
BRUSHED NICKEL



FLAT



SLOPE



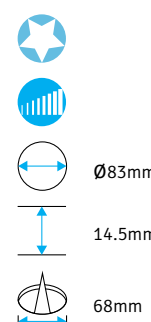
SURFACE MOUNT HOUSING

- Available in Standard or Angled
- Allows down lights to be surface mounted
- Compatible with all 48mm cutout lights
- Screw fixing

5W ROUND DOWN LIGHT

5W ROUND DOWN LIGHT

- Installed with 2 x 2.5W LEDs
- Best Installed Height 800-900mm
- Push fit Installation

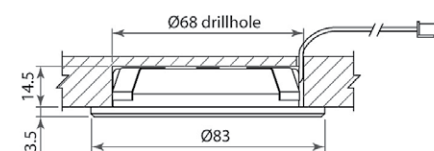


| CODES | WATTS | LIGHT COLOUR | LM | FIN. |
|--------------------|--------------|--------------|-----|------|
| AJA-11220BN | 5W 2x2.5W | CW | 352 | BN |
| AJA-11221BN | 5W 2x2.5W | WW | 284 | BN |

Handle Finish: Brushed Nickel



BRUSHED NICKEL



ACCESSORIES

EXTENSIONS WIRE

- For use with all Artia LED lights
- To help connect LED lights to a power supply at a distance

| CODES | LENGTH |
|------------------|--------|
| AJA-20001 | 1m |
| AJA-20002 | 2m |



TOUCH SWITCH

TOUCH SURFACE KNOB

- For use with on/off and 2-step dimmer controllers
- With 2 metre yellow wire

| CODE | DIAMETER | FINISH |
|--------------------|----------|--------|
| AJA-20130BN | 24mm | BN |

Handle Finish: Brushed Nickel



BRUSHED NICKEL

15mm



Touch Switch

Artia LED lighting coupled with our simple touch switch makes the latest lighting technology affordable.

The Artia touch switch can be used with:

- A touch on/off controller for regular switching.
- A dimmer controller to dim in 3-steps.
- Our coloured lights to turn on, mix colours, stop mixing on your desired colour, and turn off.

LEDs

Why use LEDs?

- LEDs use very little energy, 70-80% less than halogen, or fluorescent bulbs that are marketed as "energy saving".
- LEDs produce very little heat, which reduces the strain on air conditioning systems, further reducing energy consumption.
- LEDs illuminate immediately to full light and do not have any annoying audible buzz.
- LEDs emit no UV light, safe for people affected by fluorescent lights.
- LEDs last a lifetime, between 30,000-50,000 hours.
- Low Environmental impact, does not contain mercury, unlike fluorescent lamps
- LEDs are easily dimmable, with our simple 3-step dimmer touch switch.

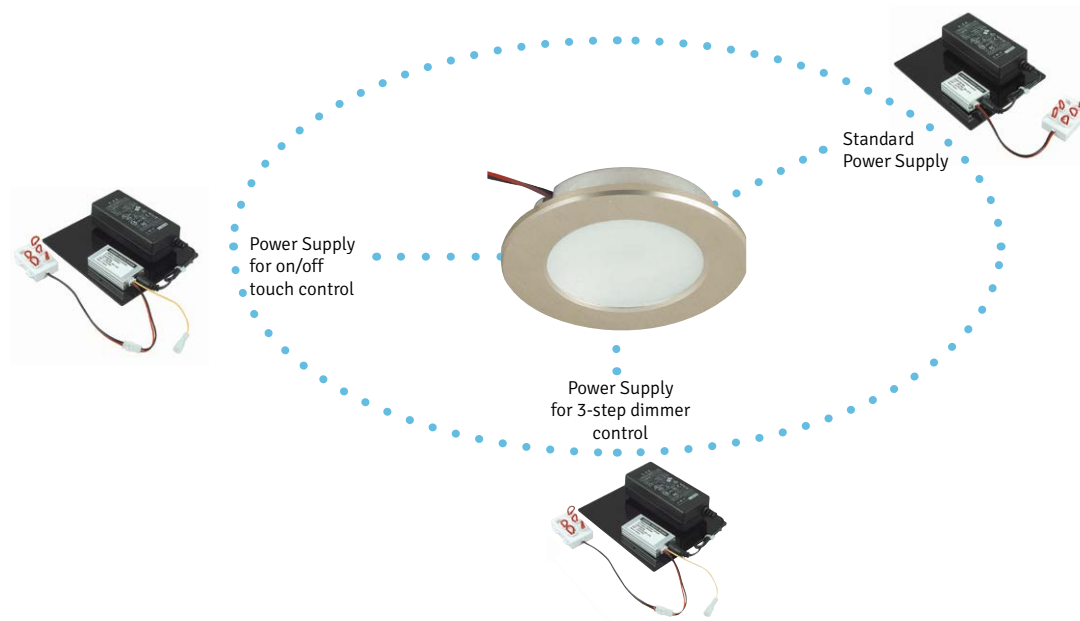


POWER SUPPLIES



UNIVERSAL POWER SUPPLIES

- All lighting products are compatible with all power supplies
- Constant current 700mA
- Australian/NZ plug included
- 1.5 metre cable
- Difference between items is the switching and control option



POWER SUPPLIES



STANDARD POWER SUPPLY

| CODE | DISTRIBUTOR | POWERS |
|------------------|-------------|--------------|
| AJA-30060 | One 6-pin | Up to 6 LEDs |



POWER SUPPLY FOR 3-STEP DIMMER CONTROL

| CODE | DISTRIBUTOR | POWERS |
|------------------|-------------|--------------|
| AJA-33060 | One 6-pin | Up to 6 LEDs |



AJA-20130BN

POWER SUPPLY FOR 2 COLOUR MIXING CONTROL

- Use for TCM system only



| CODE | DISTRIBUTOR | POWERS |
|------------------|-------------|--------------|
| AJA-35060 | One 6-pin | Up to 6 LEDs |



AJA-20130BN